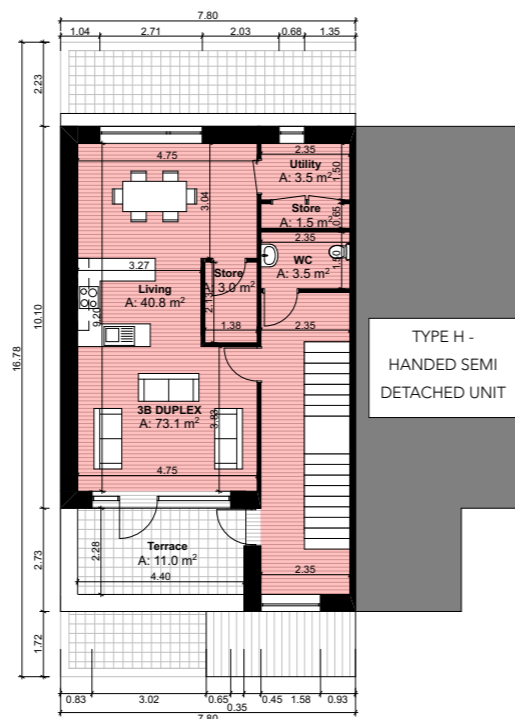
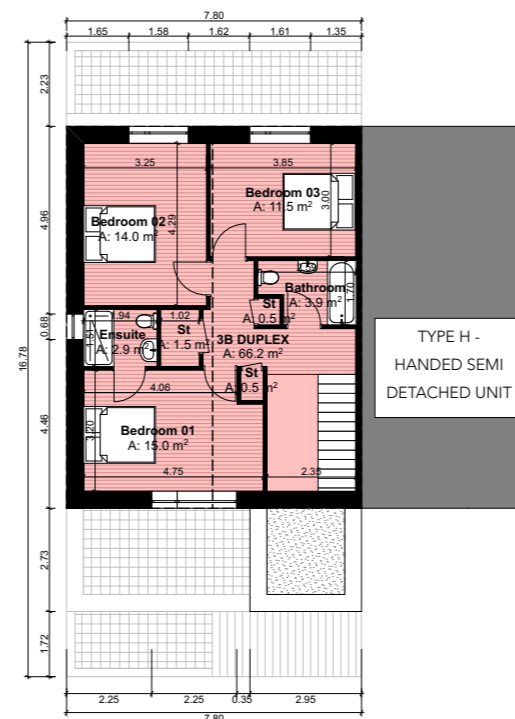


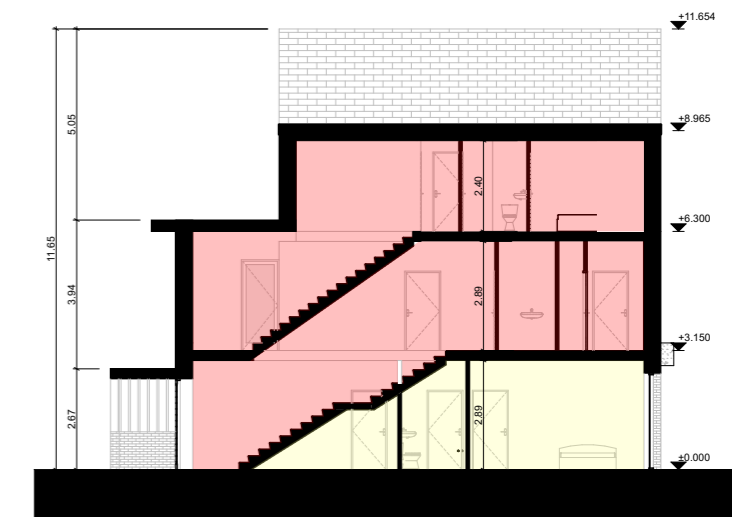
**Ground Floor Plan**  
SCALE 1:200



**First Floor Plan**  
SCALE 1:200



**Second Floor Plan**  
SCALE 1:200

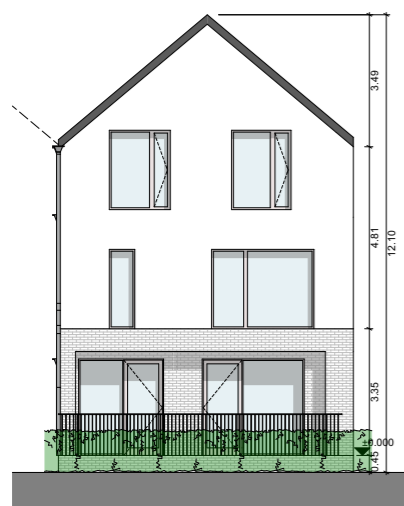


**Building Section**  
SCALE 1:200

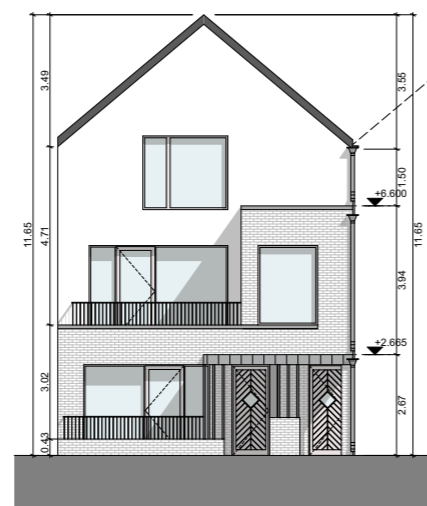
- Notes**
- Wall finishes to be selected brick / render as indicated
  - Metal balustrade to balconies to selected RAL colour
  - Canopy to entrance to be finished in zinc.
  - Roofs to be selected roof tile.

- 2 BED APARTMENT [81.7 m<sup>2</sup>]
- 3 BED DUPLEX [142.9 m<sup>2</sup>]

FOR ORIENTATION AND HANDING  
PLEASE REFER TO SITE PLAN

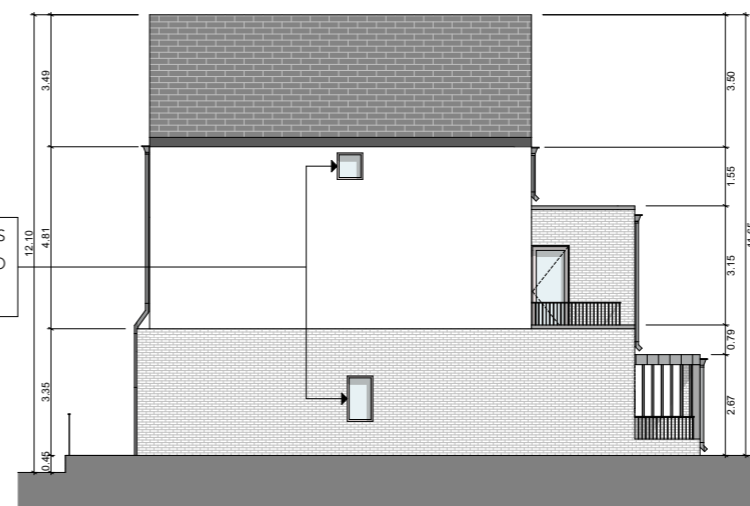


**Front Elevation**  
SCALE 1:200



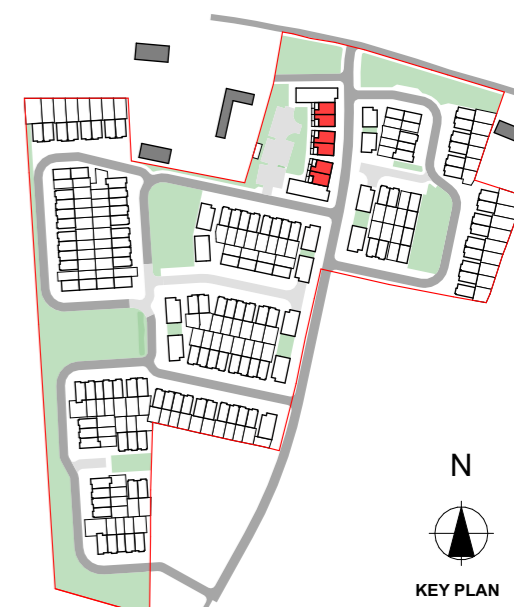
**Rear Elevation**  
SCALE 1:200

BATHROOM WINDOWS  
TO SIDE ELEVATION TO  
BE OBSCURE GLASS



**Side Elevation**  
SCALE 1:200

SIDE ELEVATION WHERE APPLICABLE



1 X 2BED, 1 X 3BED DUPLEX (GFA: 225.00 m<sup>2</sup>)